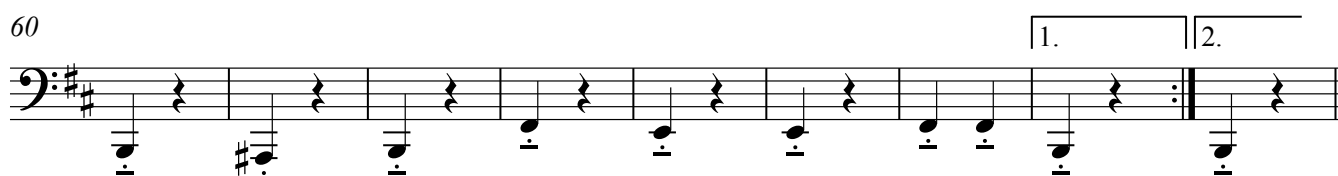
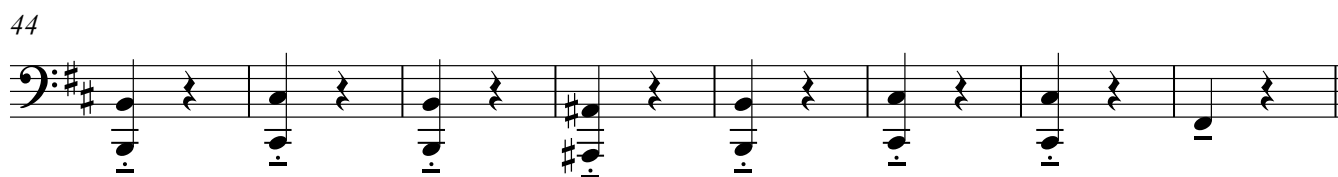
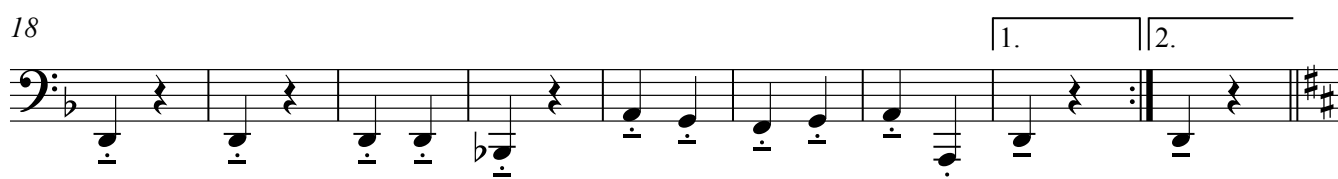


7 in C

# Rondo Alla Turca

W. A. Mozart  
Arr: Jarle G. Storløyken

**A** Allegro ♩ = 138



69 **F**

Musical staff for measure 69, starting with a bass clef and a key signature of one sharp (F#). The staff contains a sequence of notes and rests, including a double bar line and a repeat sign (//).

77

Musical staff for measure 77, continuing the bass clef and one sharp key signature. It features a sequence of notes and rests, ending with a double bar line.

85 **G**

Musical staff for measure 85, starting with a bass clef and a key signature of two flats (Bb). It includes a first ending bracket labeled '1.' and a second ending bracket labeled '2.'.

94 **H**

Musical staff for measure 94, starting with a bass clef and a key signature of two flats (Bb). The staff contains a sequence of notes and rests.

102

Musical staff for measure 102, starting with a bass clef and a key signature of two flats (Bb). It includes a first ending bracket labeled '1.' and a second ending bracket labeled '2.'.

111

Musical staff for measure 111, starting with a bass clef and a key signature of one sharp (F#). The staff contains a sequence of notes and rests, with some notes marked with a 'v' (accents).

118

Musical staff for measure 118, starting with a bass clef and a key signature of one sharp (F#). It includes a first ending bracket labeled '1.' and a second ending bracket labeled '2.'.

126

Musical staff for measure 126, starting with a bass clef and a key signature of one sharp (F#). It includes a section labeled **J**.

134

Musical staff for measure 134, starting with a bass clef and a key signature of one sharp (F#). It includes a section labeled **K**.

143

Musical staff for measure 143, starting with a bass clef and a key signature of one sharp (F#). The staff contains a sequence of notes and rests, ending with a fermata. The tempo marking *molto rit.* is present above the staff.